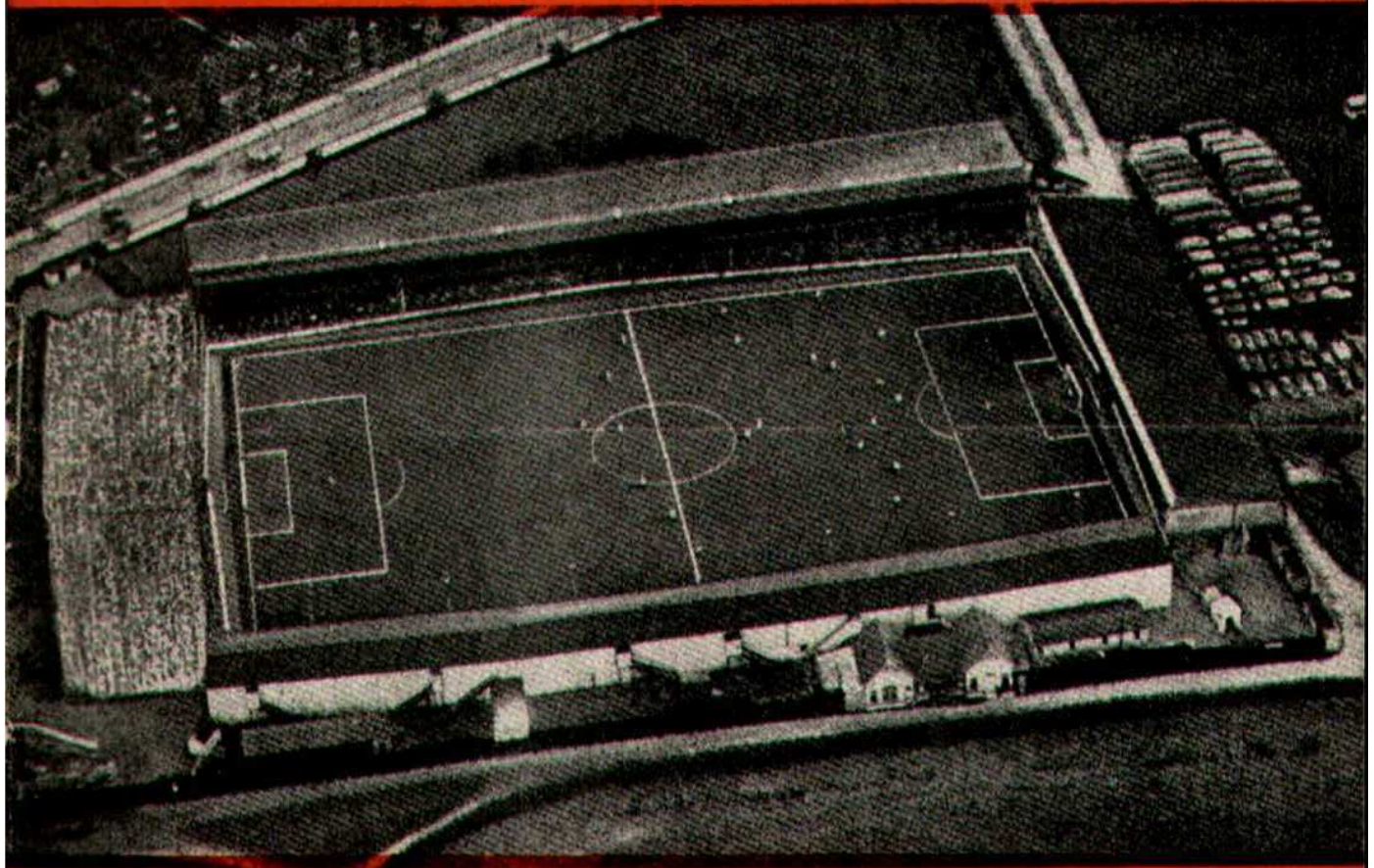




SWINDON TOWN FOOTBALL CLUB



MONDAY, APRIL 3rd, 1961

DIVISION III

SWINDON TN. v. Q.P.R.

Kick-off 3 p.m.

Official Programme **4d.**

**SOUTHERN LAUNDRY
CO. LTD.**

Launderers and Dry Cleaners



TELEPHONE 4146
STATION RD., SWINDON

GO MODERN — GO ELECTRIC

for

TELEVISION, RADIO AND
DOMESTIC APPLIANCES

D. ROBSON

22 HAVELOCK STREET

6602

Swindon

6602

Make your Goal the

EAGLE HOTEL

(Prop.: Tom Hamilton)

**WORTHINGTON :: GUINNESS
DEVENISH BEERS :: BASS
REGENT ST., SWINDON**

LITTLE & CO. LTD.

The Name Linked with Service
and Value

*The Popular Ladies' and Men's
Complete Outfitters*



31-32 FLEET ST., SWINDON
Telephone 2831

NEXT MATCH . . .

WESSEX YOUTH LEAGUE

SWINDON T. v. BRISTOL R.

THURSDAY NEXT, APRIL 6th, 1961

Kick-off 7.30 p.m.

Visit —

**THE
GRANADA CAFE**

60 CRICKLADE ROAD, SWINDON

Where good food
is served at a
reasonable price

LEESE, ING & Co. Ltd.

Incorporating BARKER & CO.

*Mineral Water and
Squash Manufacturers*



LANSDOWN RD., SWINDON
TELEPHONE 2744/2320

STADIUM SEATS

SEND FOR OUR ILLUSTRATED BROCHURE

We can manufacture to suit your requirements

**MARTYN LYNshaw LIMITED, BOUNDARY WORKS,
STRATTON ROAD, SWINDON**

SWINDON TOWN FOOTBALL COMPANY LIMITED

Registered Office: COUNTY GROUND, SWINDON.



President: H. V. SLADE, Esq., O.B.E., J.P.

Directors:

Mr. W. J. CASTLE (Chairman), Mr. H. E. LANE (Vice-Chairman).
Mr. B. T. HAMILTON (Hon. Treasurer), Messrs. C. CHANDLER, J. DAVIES,
R. FRICKER, C. J. GREEN, F. PLYER, H. WILLIAMS and K. H. WILMER.
Manager: B. J. HEAD. Secretary: R. A. MORSE.

VOL. 11

MONDAY, APRIL 3rd, 1961

No. 22

Club Notes

This afternoon we play our third game in four days. These notes are being written before any results are known. We are quite sure both games will have been very hard ones indeed. Good Friday at Shepherds Bush, and Q.P.R. fighting for promotion. Saturday at Colchester, with the home team desperate for points, in an effort to escape relegation. Points are also an urgent necessity for Swindon. The outlook for the future is, however, bright. After today we have seven games to play in Division 3. Two away games at Hull City on 15th April, and Coventry City on Friday, 28th April. Five home games, Grimsby, 8th April; Barnsley, 12th April; Hull City, 19th April; Notts County, 22nd April; Torquay, 26th April. Three in a row at home at the end of the season,

with the final game at Coventry. We hope the form shown against Newport will continue. In that game we enjoyed most of the play, but it seemed we would never score, with the near misses and the framework of the goal-posts being hit. However, everything turned out right, but we cannot continue to miss easy goal-scoring opportunities. At the same time the ball just does not run right for our lads, as instance in the last few minutes. Mike Summerbee, after drawing Weare out of his goal, lobbed the ball in front of an open goal, just a shade too far for Bob Woodruff to run on to it.

Arrangements are now almost complete for our Senior team to visit Holland, May 14th to May 25th. This tour is being organised by the Oxford Committee for the relief of famine in the world. Almost all the expenses are being

BE A GOOD SPORT
SHOP AT
Ron's Pet Stores
RODBOURNE ROAD and
CRICKLADE ROAD

Poultry Foods - Fresh Dog Meat

**WATSON'S
CENTRAL NEWSAGENCY**
LTD.
Swindon's Leading Wholesaler
1 WELLINGTON STREET, SWINDON
Tel. 2049

M. J. REYNOLDS
GROCER

152/154 CRICKLADE ROAD
5479 SWINDON 5479
COOKED HAM OUR SPECIALITY

L. WOLLEN
WINES & SPIRITS

373 Cricklade Rd., Swindon

CLUB NOTES—continued

met by the teams which act as our hosts, so that the gates will swell the funds of the Committee. Four matches will be played, and the party will number seventeen in all. It should be a splendid treat for our young lads. Supporters will no doubt notice with pleasure the success of two of our ex-players — John Richards at Aldershot and Bob Edwards, recently transferred to Northampton. He scored two goals in his first game at Crystal Palace and

again versus Doncaster last Saturday.

Today we welcome with great pleasure our friends from Queen's Park Rangers. Under Manager Mr. A. Stock they are enjoying one of their best seasons for a long time. Their form deserves to gain them promotion, but they are finding it "tough at the top". No doubt they will be most anxious to hold their position in the league. The game will, therefore, be a keen one, but our earnest wish is that our spectators enjoy a real game of football.

FOR ALL YOUR ANGLING NEEDS
CONSULT

FRANK WOODWARD
Swindon's Fishing Tackle Specialist
25 HAVELOCK ST., SWINDON
PHONE 3879

H. E. LANE
(REGENT STREET) LTD.
The Pork Sausage Specialists
117 Victoria Rd., Swindon
Telephone: 2336

ARE YOU GOOD ENOUGH
to join the

**DUKE of EDINBURGH'S
ROYAL REGIMENT ?**

A fine career awaits you at
ARMY INFORMATION OFFICE,
18 Faringdon Road, Swindon

FIXTURES AND RESULTS TO DATE

DIVISION III

1960		
Aug. 20	Halifax Tn. H	1-1
22	Tranmere R. A	2-2
27	Shrewsbury A	1-1
31	Tranmere R. H	1-0
Sept. 3	Walsall H	1-0
6	Bristol C. A	1-1
10	Bury A	0-3
17	Chesterfield H	2-0
20	Watford A	0-1
24	Southend U. A	2-0
28	Watford H	1-2
Oct. 1	Port Vale H	6-0
5	Torquay U. A	1-1
8	Notts C. A	0-1
12	Shrewsbury (Cup) H	1-1
15	Bournemouth H	0-1
19	Bristol C. H	3-1
22	Bradford C. A	1-2
29	Barnsley H	P
Nov. 5	Bath City (Cup) ... H	2-2
10	Bath City (Cup) ... A	6-4
12	Colchester U. H	0-2
19	Grimsby T. A	0-0 A
26	Shrewsbury (Cup) H	0-1
Dec. 3	Reading A	1-1
10	Coventry C. H	1-2
17	Halifax T. A	1-1
24	Brentford A	1-2
31	Shrewsbury H	2-2
1961		
Jan. 7	(3) Brentford H	1-1
14	Walsall A	0-3 A
21	Bury H	4-0
28	(4) Newport C. A	0-2
Feb. 4	Chesterfield A	1-1
11	Southend U. H	1-1
18	(5) Port Vale A	1-4
25	Reading H	1-1
Mar. 4	(6) Bournem'th A	1-2
11	Bradford C. H	4-0
18	(S.F.) Barnsley A	1-2
21	Walsall A	1-2
25	Newport C. H	2-0
31	Q.P.R. A	
Apr. 1	Colchester U. A	
3	Q.P.R. H	
8	Grimsby T. H	
15	Hull C. A	
22	Notts C. H	
26	Torquay U. H	
29	Coventry C. A	
May 6	(Final)	

FOOTBALL COMBINATION

1960		
Aug. 20		
24	Aldershot A	2-4
27	Shrewsbury T. H	3-0
Sept. 3	Millwall A	3-4
7	Fulham A	1-1
10	Southend U. H	1-2
13	Brentford A	0-2
24	Brentford H	0-1
27	Northampton A	0-0
Oct. 1		
8	Mansfield T. H	4-2
15	Reading A	0-1
22	Swansea T. H	1-1
29	Plymouth A. A	0-0
Nov. 5	Crystal P. H	P
12	Colchester U. A	1-2
19	Notts C. H	P
26	Coventry C. A	P
Dec. 3	Luton Tn. H	P
10	Mansfield T. A	1-2
17	Northampton H	1-3
24	Bristol R. H	1-1
26	Bristol R. A	0-6
31	Shrewsbury T. A	1-3
1961		
Jan. 7	Peterborough U. A	1-3
14	Millwall H	3-3
21	Southend U. A	1-3
28	Peterborough U. ... H	0-2 A
Feb. 4	Fulham H	0-5
11		
18	Aldershot H	0-0
25	Swansea Tn. A	0-4
Mar. 4	Plymouth A. H	2-0
11	Crystal P. A	0-1
18	Colchester U. H	1-0
22	Coventry C. A	2-0
25	Notts C. A	0-1
31	Q.P.R. H	
Apr. 1	Coventry C. H	
3	Q.P.R. A	
8	Luton T. A	
15	Reading H	
22		

Our Visitors

QUEEN'S PARK RANGERS

This afternoon we welcome our friends from Queen's Park Rangers F.C. The team is enjoying one of its most successful seasons under Manager Alec Stock and at the time of writing it was occupying second position in the Division III League Table.

Last season's encounter between the two teams resulted in a win for us by 2 goals to 1. Our goals were scored by Layne.

Details of the probable team are:-

		Ht.	Wt.	Prev. Club	Born
Drinkwater	(G)	6. 0	12.11	Portsmouth	Jarrow
Baker	(RB)	6. 2	11. 9	Juniors	London
Ingham	(LB)	5.11	11. 5	Leeds Utd.	Harrowgate
Keen	(RH)	6. 0	11. 5	Juniors	Wycombe
Rutter	(CH)	6. 0	11. 8	Methley U.	Leeds
Angell	(LH)	5. 9	11. 5	Slough T.	Chalvey
Lazarus	(OR)	5. 9	11. 7	Leyton O.	Stepney
Bedford	(IR)	5.11	11. 8	Bournemouth	Ferndale
Evans	(CF)	6. 0	13. 4	Wrexham	Chester
Longbottom	(IL)	5. 9	10.13	Methley U.	Leeds
Andrews	(OL)	5. 5	10.10	Leyton O.	Angus

The Rangers play at Loftus Road, London, W.12. The record attendance at the ground is 30,564 against Luton Town in the F.A. Cup Competition on 7th February, 1948. The receipts of £2,844 were also a record for the Club.

C. Dunn & Son

BUILDERS & DECORATORS

Alterations, Renovations, Conversions
Plumbers and Sanitary Engineers

503 CRICKLADE ROAD Tel. 2522

NOTTON'S CAFE

COUNTY ROAD

200 yards from Ground

RIGHT ON THE BALL

County Ground Hotel

(Adjoining Football Ground)

FULLY LICENSED

ARKELL'S ALES at THEIR BEST

Mine Host—Mr. Geo. Baillie

AT THE COUNTY GROUND TODAY—

WISES CATERING SERVICE

SWINDON'S LEADING OUTSIDE CATERERS
and for all your Special Events

55 GODDARD AVE. Phone 5562

A DATE FOR YOUR DIARY . . .

TUESDAY, MAY 2nd, 1961

SWINDON T. v. BLACKBURN R.

Kick-off 7.30 p.m.

This game is a Benefit Match for SAM BURTON and
FREDDY THOMPSON.

Tickets at the usual Division III prices will be on sale shortly.

GODDARD & Co.

Wholesale and Retail

WINE, SPIRIT, BEER
AND CIDER MERCHANTS



9 REGENT STREET, SWINDON

Telephone 2415



Also at

4 WINGATE PARADE, SWINDON

We are your MAIN DEALER for
VAUXHALL and **JAGUAR** cars
BEDFORD Vans and Trucks
Etc.

Any make of Car or Truck
supplied - Used Vehicles a
specialised part of our
business.



SKURRAY'S

SWINDON

Telephone: 2266

STRANGE'S GARAGE

Austin Dealers in Cars and Light Vans
Agents for Vespa Scooters
Second-hand Cars Bought and Sold

WOOTTON BASSETT

Telephone 216

Swindon Bacon Curing Co. Ltd.

*Specialists in
Bacon, Pork & Cooked Ham*

**50 FLEET STREET
SWINDON**

Telephone: 2122

WARNES (Swindon) Ltd.

ELECTRICAL CONTRACTORS
RADIO AND TELEVISION

Contractors to:
SWINDON TOWN FOOTBALL CLUB
* * *

51/52 COMMERCIAL RD., SWINDON
'Phone 6486/6694

160 COUNTY RD., SWINDON
'Phone 6346/7

9 SWINDON ST., HIGHWORTH
'Phone 379

HALF-DAY EXCURSION BOOKINGS

Every Wednesday
to

LONDON
12/3

from SWINDON JUNCTION
Depart 2.32 p.m. and 4.5 p.m.
(Refreshment Car Trains)

Return from Paddington 6.35, 8.5,
8.55, 9.25, 10.30, 11.50 p.m. the
same day, or 1.0 (night).

BRITISH RAILWAYS

Western Region

W. B. CARTER

Newsagent, Tobacconist and Confectioner

Large selection of Boxes of Chocolates
always in stock

CORONA, TIZER, DRINKS, Etc.

Agents for Wall's Ice Cream

188/190 FERNDALE RD., SWINDON

Telephone: 3089

MILLS & MER

H
O
U
S
E
F
U
R
N
I
S
H
E
R
S

SWINDON TOWN v. QUEEN'S PARK
SWINDON

RIGHT WING

Colours: RED SHIRTS,

Burton

Jones (2)

Morgan (4)

Owen

Corbett (7)

Hunt (8)

Summerbee

Referee:

Mr. P. G. Brandwood
(Kidderminster)

Andrews (11) Longbottom (10) Evans

Angel (6)

Rutter (5)

Ingham (3)

Drinkwater

QUEEN'S PARK

LEFT WING

These teams are subject



16-17 BRIDGE ST, S

Blunsdon Abbey Caravans Ltd.

N.C.C. Approved Trader

TRY CONSULTING US

FOR

SALE, SITES & SERVICE

A Home of your own in a few years
and no Landlord

Tel. Blunsdon 281

For Our Information Service

"Keep that Team spirit"
**JOINT TERRITORIAL
 THE ARMY**

Units in WILTSHIRE
 still need recruits

Apply for details by letter or by
 phone or in person at your local
 Drill Hall

**THE PLESSEY COMPANY
 Ltd.**

After years of achievement have great
 expansion plans for the future.

**TECHNICAL STAFF
 CLERICAL STAFF
 MANUAL WORKERS**

are essential for this progress.

Interested persons please apply to the
 Personnel Department.

ERRICKS LTD.

U
P
H
O
L
S
T
E
R
E
R
S
•
R
E
M
O
V
A
L
S

**S PARK RANGERS. Kick-off 3 p.m.
 NDON TOWN**

D SHIRTS, WHITE SHORTS LEFT WING
 Burton

Trollope (3)

Owen (5) Bell (6)

Merbee (9) Woodruff (10) Darcy (11)

Linesmen:

Red Flag—

Mr. S. L. Evans
 (Neath)

Yellow Flag—

Mr. B. Grey
 (Portishead)

Evans (9) Bedford (8) Lazarus (7)
 Rutter (5) Keen (4)

Baker (2)

rinkwater

PARK RANGERS

are subject to alteration

RIGHT WING

T, SWINDON

PHONE
 5365



INSIST ON
Garrard
 EQUIPMENT



For Superb Tape and Record Playing



Fitted by the World's leading
 manufacturers.

Haskins Garage

Sales : WROUGHTON : Service
 263

AUSTIN
 LAND ROVER

MORRIS
 ROVER

**SWINDON'S NEW SNACK
 AND GRILL BAR**

HARLEQUIN

90 VICTORIA ROAD, SWINDON

Open Daily 8.30 a.m. - 9.0 p.m.

The Best Draw Home or Away!

"DO IT YOURSELF"

**BAYNES (SWINDON)
 TIMBER Co. Ltd.**

County Works, County Road, Swinden
 Tel. 4112/3

"THE PERFECT CENTRE"

for all "do-it-yourself" enthusiasts.
 Call, write, phone your requirements:
 Hardwoods, softwoods, moulding, ply-
 wood, Formica and Perstorp, etc., all
 cut to your given sizes.

"IF WE HAVEN'T GOT IT — WE'LL GET IT!"

Comprehensive catalogue sent on request
 One minute from the Ground

ONE QUALITY ONLY — THE BEST!

FRESH SUPPLIES DAILY

York Road Fisheries

SWINDON

WET, DRY or FRIED Tel.: 3680

DEMPSTER ENTERPRISES, offer a modern fleet of 4 and 6 seater self-drive hire cars, for your pleasure and convenience. For advance bookings apply:-

Dempster Enterprises

4 MILTON ROAD, SWINDON

Tel. 6603

Rent your T.V. - Washing Machines
Spin Dryers - Electrical Installations
from

D. V. HOLLAMBY LTD.

138 High St., Wootton Bassett, Wilts.

Telephone 295

ALL LEADING MAKES IN STOCK

Howard Autos, Swindon's Main Cotton Motor Cycle distributors always have a good selection of guaranteed used cars for you to choose from.

HOWARD AUTOS

3 WELLINGTON ST., SWINDON

Tel. 6603

STAND TICKETS

Tickets for seats in the Old and New Stands may be booked in advance. Postal applications should be accompanied by a remittance and stamped addressed envelope. Tickets ordered by telephone must be collected not later than 12 noon on the day of the match, otherwise they will not be reserved.

Prices for League Matches:—

New Stand—Block C—6/- (Centre)

Blocks B and D—5/- (Side Stands)

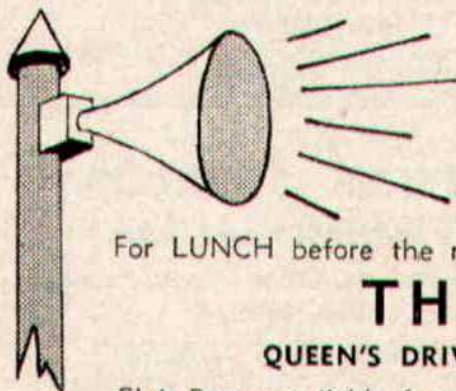
Blocks A and E—3/6 (Wing Stands)

Old Stand—Centre Box—7/6

Block H—5/- (Centre)

Blocks F, G and I—3/6 (Side Stands)

Postal applications to—Secretary, Swindon Town F.C., County Ground, Swindon, Wilts. Telephone Swindon 2118.



**A SPECIAL
MESSAGE**

For LUNCH before the match—or a SNACK afterwards, visit

THE BULLDOG

QUEEN'S DRIVE, WALCOT ESTATE — Tel. 6877

Club Room available for meetings, private parties, wedding receptions, etc.

A SIMONDS TAVERN

Supporters' Club

Notes

As most supporters will know, Sam Burton has qualified to receive a third benefit, which has been duly awarded by the Directors of Swindon Town F.C., and in accordance with our usual custom, the Committee of this Club arranged to make a collection to augment the fund.

It has been decided to allocate the collection at today's match for this purpose, and we appeal with confidence for a generous response.

We trust also that Sam's play in the first half will have put the crowd in a good humour at half-time!

Sam must now have become one of the Town's longest service players—certainly amongst local

products. He has beaten the record of Ted Nash, the pre-war goalkeeper who was also a local player.

Sam Burton joined the Town in 1945, when football was resumed at the County Ground after the war, and although displaced from time to time by such players as Frank Boulton and Norman Uprichard, he remained loyal to the Club, and has now held his place for several seasons.

These notes are being written before the holiday matches, owing to advance printing arrangements, but we trust that by this time, in spite of a difficult programme, the results will have been such as to allay fears for the future.

We wish the players the best of luck today.

The lucky programme holders on 25th March did not claim their prizes.

KEY OF THE BOARD

Half-time scores will be given in two sections. First Section indicated by **[1]**. Second Section indicated by **[2]**.

FIRST SECTION

- A—Arsenal v. Fulham
- B—Birmingham v. Cardiff City
- C—Chelsea v. Tottenham H.
- D—Leicester City v. West Ham U.
- E—Manchester Utd. v. Blackpool
- F—Nottingham Forest v. Burnley
- G—Sheffield Wed. v. Newcastle U.
- H—West Bromwich A. v. Wolverhampton W.
- I—Derby County v. Rotherham
- J—Huddersfield v. Charlton A.
- K—Middlesbrough v. Ipswich
- L—Norwich City v. Sunderland
- M—Portsmouth v. Sheffield Utd.
- N—Southampton v. Leyton Orient
- O—Bradford City v. Tranmere
- P—Hull City v. Chesterfield
- Q—Reading v. Southend
- R—Walsall v. Colchester Utd.
- S—Watford v. Bournemouth
- T—Aldershot v. Stockport County

SECOND SECTION

- A—Exeter City v. Northampton
- B—Gillingham v. Southport
- C—Mansfield Town v. Oldham

The Rendezvous of all Sportsmen . . .

THE CROWN INN

(Host: Frank Plyer)

Arkell's Best Ales : Fully Licensed
Snacks, etc.

STRATTON ST. MARGARET Tel. 2339

"SUPPORT YOUR HOME"

CIVIL DEFENCE

plays a vital part in saving lives

Particulars:

CIVIC OFFICES, SWINDON

WIN OR LOSE!

THE FOOD IN THE

China Restaurant

IS BEST

107 COMMERCIAL ROAD

SWINDON 6888

Open Daily 12.0 a.m. - 11.30 p.m.
For all Chinese and English Dishes

**SPECTATORS ARE REQUESTED
NOT TO CROSS THE PLAYING
PITCH AT THE END OF
THE GAME**

COATE GARAGE



THE ALCOHOL FUEL

REPAIRS
SERVICING
TYRES

★

OVERHAULS
REBORING
WELDING

Props.: E. V. & W. H. Mattick
MARLBOROUGH ROAD, SWINDON

For something a little different, try

DON JONES

HIGH CLASS CONFECTIONER
AND TOBACCONIST

Always a good selection of
SUCHARDS' - TOBLER
TERRY'S
Quality Chocolates and Presentation
Boxes

112 COMMERCIAL ROAD
6012 SWINDON 6012

Typewriters
from £10

FULLY GUARANTEED

**DOBELL SHEARMAN
& CO. LTD.**

26 HIGH ST. & 33 FARINGDON RD.,
SWINDON Telephone 2312

Only 800 yards to your Dream Car —
NEW ALPHA MOTOR Co.
(SWINDON) LTD.

QUEENS DRIVE, SWINDON

Tel. 5062/63

For Top Quality Used Cars at the
Lowest Prices

Open 7 days per week from 7 a.m. to 10.30 p.m.

**WHAT'S ON AT THE COUNTY GROUND
DURING APRIL AND MAY**

April	3	First Team v. Q.P.R.	-	-	Kick-off	3.00	p.m.
	6	Youth Team v. Bristol R.	-	-	"	7.30	p.m.
	8	First Team v. Grimsby Town	-	-	"	3.00	p.m.
	10	Youth Team v. Plymouth A.	-	-	"	7.30	p.m.
	12	First Team v. Hull City	-	-	"	7.30	p.m.
	13	Reserves v. Notts County	-	-	"	7.30	p.m.
	15	Reserves v. Reading	-	-	"	3.00	p.m.
	17	Wessex Yth. Lge v. W. Ham Yths.	-	-	"	7.30	p.m.
	19	First Team v. Barnsley	-	-	"	7.30	p.m.
	20	Reserves v. Luton Town	-	-	"	7.00	p.m.
	22	First Team v. Notts County	-	-	"	3.00	p.m.
	24	Youth Team v. Weymouth	-	-	"	7.30	p.m.
	26	First Team v. Torquay Utd.	-	-	"	7.30	p.m.
	29	Reserves v. Peterborough U.	-	-	"	3.00	p.m.
	29	Hellenic Team v. Stokenchurch	-	-	"	6.30	p.m.
May	1	Reserve Team v. Crystal Palace	-	-	"	7.30	p.m.
	2	First Team v. Blackburn Rovers	-	-	"	7.30	p.m.
	4	Youth Team v. Newport County	-	-	"	7.30	p.m.
	11	First Team v. N.A.C. Breda (Holland)	-	-	"	7.30	p.m.

**Chappell's Funeral
Service**

(Fun. Dir. 1 A. A. Winchcombe)

**196 COUNTY ROAD
SWINDON**

24-hour Service

Tel. 6073

*Don't buy a Car, Motor Cycle or Scooter
until you have seen the wide selection we
have to offer at*

**CORONATION
CAR SALES**

67/68 VICTORIA ROAD

Telephone: 6106

**SEA VIEW HOLIDAY
CAMP**

YOUR HOST—Mr. BENNETT



**WYKE REGIS - WEYMOUTH
Dorset**

"COAL!"
"COAL!"
"COAL!"

J. WILMER

ST. MARGARET'S ROAD, SWINDON

Telephone 22535

MEET YOUR FRIENDS AT THE

Southbrook Inn

(Hosts: Mr. and Mrs. Jack Scutts)

FULLY LICENSED
CLINCH BEERS, ETC.

**SOUTHBROOK STREET, SWINDON
Tel.: 5837**

STOP ! LOOK !

NU-HOMES

For all Household Fitments

Paints - Emulsions - Wallpapers
Kitchen Units and Bathroom Suites,
etc.

**176a Manchester Road
TELEPHONE 2178**

FORTHCOMING MATCH . . .

DIVISION III

SWINDON T. v. GRIMSBY T.

SATURDAY NEXT, APRIL 8th, 1961

Kick-off 3 p.m.

**TO ALL LOCAL SPORTS
CLUBS**



It is quicker and cheaper
to WASH and DRY your
Football Clothes at

The Launderettes

at

59 WELLINGTON STREET

or

**186 VICTORIA ROAD
SWINDON**

*For High Class
Central Heating, Plumbing
Painting and Decorating
Electrical Installations
and Repairs*



NORTH WILTS

Sanitary & Heating
Co. Ltd.

NEWPORT ST., SWINDON

'Phone: 4201

Always at your service

L. BIBBY

For all Types, Rags, Iron and Metal,
etc. Spot Cash Paid. Please Telephone
2101 and our van will call.
THE PADDOCK, ERMIN STREET
STRATTON ST. MARGARET

Walcot Greengrocer

G. E. STAMMERS

✽

**1 SUSSEX SQUARE
SWINDON**

SWINDON **2526**

CAN ALSO BE YOUR LUCKY NUMBER ! ! !

if you ring

HOLMES & LUCAS

14A REGENT STREET :: SWINDON

for all your

TELEVISION, RADIO AND ELECTRICAL REQUIREMENTS

LUCKY PROGRAMME

Please retain your programme. An announcement will be made at half-time of two numbers and the holders will be given a stand seat at the next Division III game. The persons who purchased the programmes bearing the winning numbers should call at the office after the game and claim their seats.

1508

FRIED FISH AND CHIPS

Always Fresh - Always Hot

WALCOT FISHERIES

Sussex Square

Wet fish and frozen foods all refrigerated display.

Telephone Swindon 2731

6 REGENT CIRCUS (NEAR G.P.O.)

OR FOR YOUR FOOTBALL OUTINGS
BOOK YOUR COACH FOR PRIVATE PARTIES
Main Booking Agents for Millers Coaches
Agents for Wessex School of Motoring
Newsagents : Tobacconists : Confectioners
A. J. D. WOODHOUSE & A. SMITH

HATTON'S NEWSAGENCY

For Insurance or Hire Purchase

CARS - CARAVANS - MOTOR CYCLES, etc.

Consult

D. & H. HENTY LTD.

54 COMMERCIAL RD., SWINDON
SWINDON 5258

PANKHURST

**The Palace, Gorse Hill,
Swindon.**

MOTOR CYCLE - SCOOTER AND
THREE-WHEELER SPECIALISTS

Open Mon. to Sat. 9 a.m. - 8 p.m. Phone 5466

To be well shod—

is to be well dressed

Victoria Shoe Repairs

129 VICTORIA ROAD, SWINDON

First class materials and workmanship

Maylott Studios

For GROUP & SPORT Photographs

OFFICIAL PHOTOGRAPHER TO
SWINDON TOWN FOOTBALL CLUB

31 FARINGDON RD. Tel. 2792